

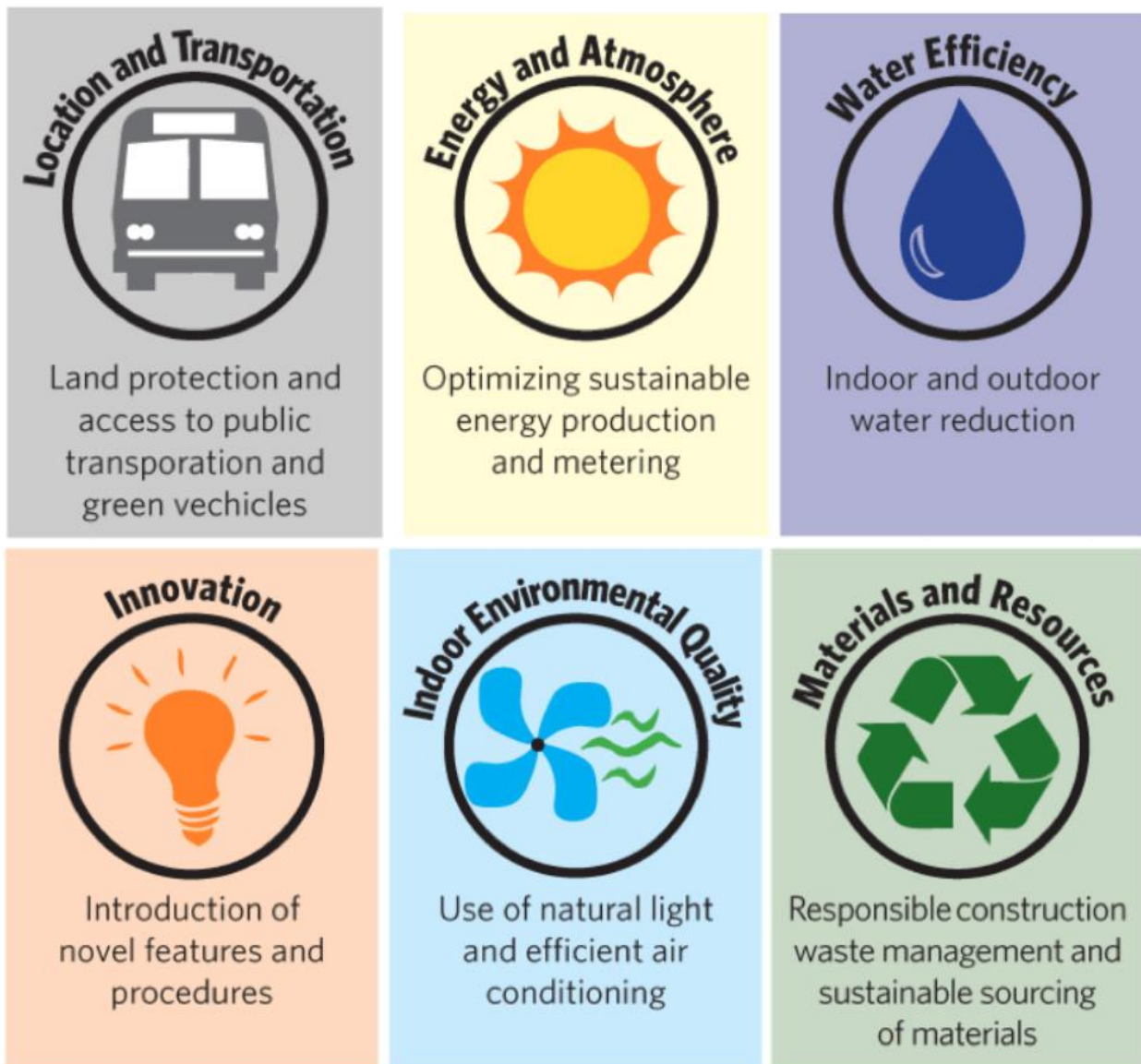
LEED SIGNAGE SYSTEM CAPITAL PLACE OFFICE

As a member of the U.S. Green Building Council, Capital Place Office has made a commitment to the environment. When designing and constructing Capital Place Office, we built an innovative green office with the aim to improve working conditions and environmental sustainability. To educate the staff and visitors of the benefits of green office, we built a comprehensive signage program into Capital Place Office.

Below are a few samples as part of our signage system of the office:

1 LEED INFORMATION SIGNAGE

The signage is placed at Reception area which is close to the main entrance of the office. It helps generate and encourage public awareness and understandings toward LEED certification and its core concepts.



2 SMOKING POLICY

At Capital Place Office, smoking is strictly in all areas off the project boundary. If necessary, employees, visitors and guests are followed to smoke at the dedicated smoking area, at level 1. Within radius = 7.5 meters, there are no any entries, outdoor air intakes or operable windows.

- ✓ Communicate for exterior smoking policy: At the entrance gate, the signage below would be stuck at the visible side of the entrance gate where all guests, employees, staffs and visitors could acknowledge.



- ✓ Communicate for interior smoking policy: “NO SMOKING/ CẤM HÚT THUỐC” sign boards will be placed in front of the entrance of building, along the corridor and inside of the office, toilet area, and inside common areas also.



3 WASTE SORTING INTRODUCTION

Clearly distinguished colored wastes bins are provided to instructs and encourage not only building occupants, but also visitors and public to treat recycle waste in the right way.



4 EFFICIENT WATER USE

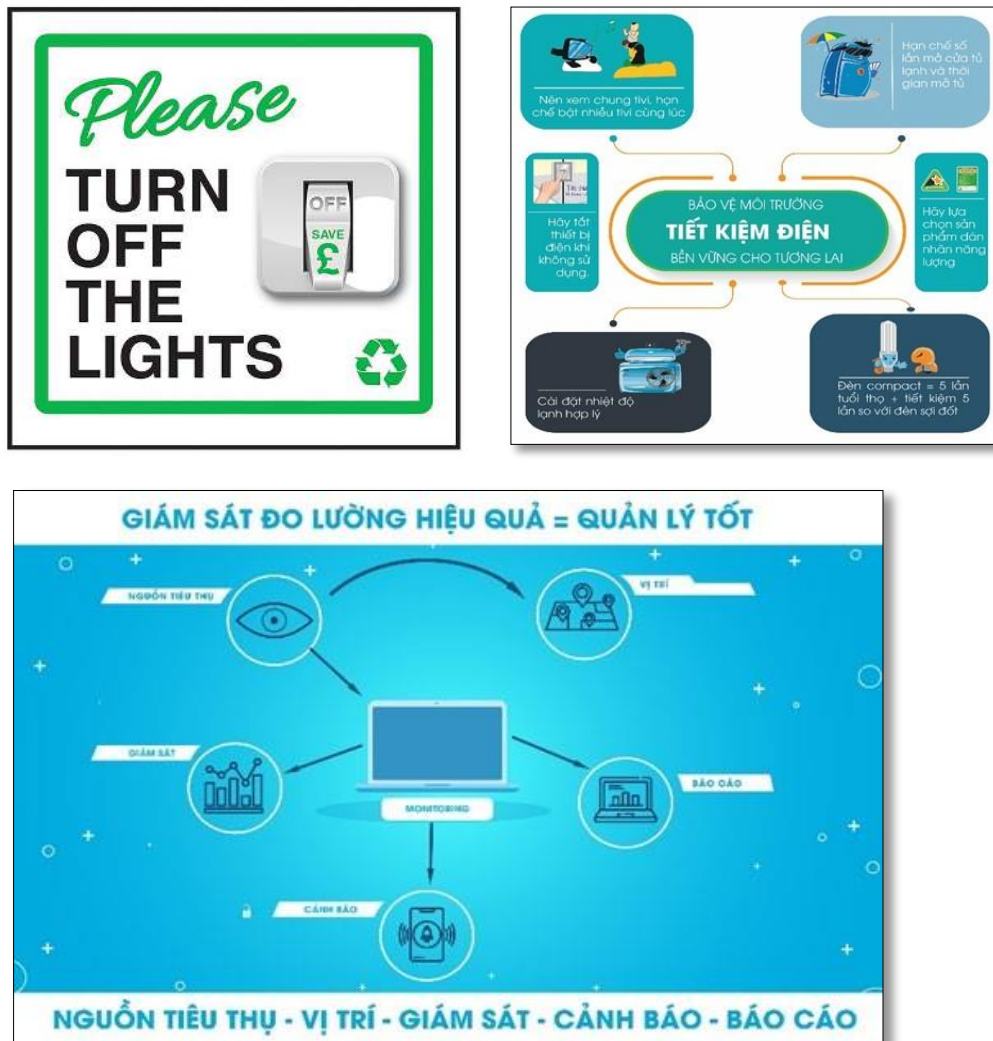
4.1. Indoor water use

In order to educate occupants to use water consciously, following informative signage would be placed in male/female restrooms, and pantries.



5 EFFICIENT ENERGY USE

In order to educate occupants to use power consciously, following informative signage would be placed in office, meeting room, workshop.



LEED SIGNAGE SYSTEM

6 EDUCATION PROGRAM

Provide public education focusing on green building strategies and solutions.

NHÀ MÁY
NÂNG CAO NHẬN THỨC VỀ MÔI TRƯỜNG

HÀNH ĐỘNG NHỎ, Ý NGHĨA LỚN

- Tắt đèn khi rời khỏi phòng
- Tắt máy tính sau giờ làm việc
- Sử dụng nước hiệu quả
- Đóng vòi nước trong lúc đánh răng
- Phân loại và tái chế rác thải
- Thu gom riêng rác thải điện tử để xử lý
- Sử dụng bình uống nước sử dụng nhiều lần
- Sử dụng phương tiện công cộng

Tối ưu hóa thiết kế

- Nâng cao chất lượng không khí trong nhà
- Hiệu quả nước
- Hiệu quả năng lượng

Giảm thiểu rác thải

- Tái chế rác
- Xử lý nước thải

CÙNG CHUNG TAY BẢO VỆ MÔI TRƯỜNG SỐNG

TIẾT KIỆM ĐIỆN
Save Electricity

KHÓA NƯỚC SAU KHI SỬ DỤNG
Valve off after use

NGẮT ĐIỆN SAU KHI SỬ DỤNG
Switch off after use

LEED SIGNAGE SYSTEM